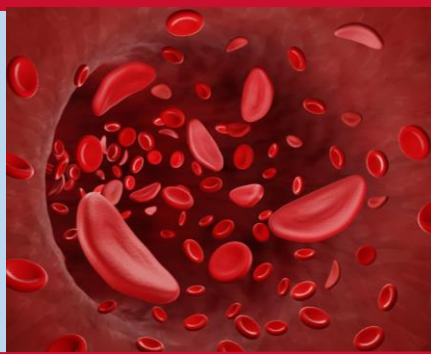


## Prince George's County Access To High-quality Sickle Cell Care



## PATHS: Improving access to Care for Prince George's County residents living with Sickle Cell Disease

PATHS is committed to helping sickle cell warriors in Prince George's County access the top-tier clinical services and community support they deserve.

### Adult Sickle Cell Clinic

UM Capital Region Health's dedicated **Adult Sickle Cell Clinic** in Largo offers:

- ✓ Pain management – injectables, intravenous, oral
- ✓ IV hydration, simple chronic blood transfusion
- ✓ Crizanlizumab infusion, epogen infusion/injection
- ✓ On-site point of care testing
- ✓ Routine follow-up, telehealth appointments



### Access to Resources

PATHS, through **MSCDA** community health workers, provides access to social services that many people with SCD need, such as:

- ✓ **Transportation** to and from medical appointments
- ✓ **Food assistance** through food vouchers and gift cards
- ✓ Assistance in researching **employment training** and **access to housing**

Call **240-677-2206** to make an appointment.

Call **443-490-5177** for more information.



We have brought together area champions of sickle cell disease to increase awareness and ease the stigma and suffering of those living with this debilitating genetic disease. Our partners include:

UM CAPITAL  
REGION HEALTH



The PATHS Program was created because people living with Sickle Cell Disease (SCD) in Prince George's County (PGC) have not had access to comprehensive sickle cell care within PGC. PATHS is a research study to assess whether a model of providing SCD care in an area with the help of a separate, established SCD center, is an effective way to deliver quality care to SCD patients. PI: Lanzkron IRB00342752

This program is funded by the Maryland General Assembly as part of the Maryland Health Equity Resource Communities Act. Grant funding is administered by the Maryland Community Health Resources Commission. For more information, please visit <https://health.maryland.gov/mchrc/Pages/herc.aspx>. The views presented here are those of the grantee organization not necessarily those of the Commission, its Commissioners, or its staff.